

WILDFIRE EVACUATIONS CAN HAPPEN QUICKLY

BE READY, BE SET, TO GO!

READY - PREPARE NOW

- Make a family communication plan that includes family phone numbers, out-of-town contacts and family meeting locations.
- Assemble an emergency supplies kit (Go Kit). Start with the five P's; people and pet supplies, prescriptions, papers, personal needs and priceless items.
- Check with your neighbors, family, and friends to ensure they are READY.
- Keep up to date on local news, weather watches and warnings; follow your local Emergency Management and public safety social media.

SET - BE ALERT

- Residents should consider voluntarily relocating to a shelter or with family/friends outside the affected area.
- Grab your emergency supplies kit.
- Keep in mind unique needs for your family or special equipment for pets & livestock.
- Stay aware of the latest news and information from public safety officials.

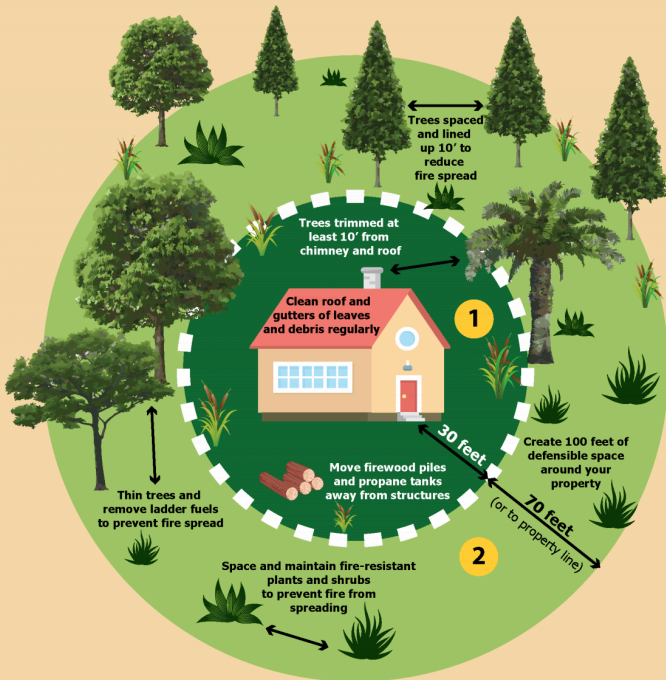
This might be the only notice you receive. Emergency services cannot guarantee they will be able to notify everyone if conditions rapidly deteriorate.

Be SET to GO!

GO! - EVACUATE

- Residents should evacuate immediately to a shelter or with family/friends outside of the affected area.
- If you choose to ignore this advisement, you must understand emergency services may not be able to assist you further.
- Follow instructions from emergency personnel, stay on designated evacuation routes and avoid closed areas.

Visit: www.YavapaiReady.Gov
for more information



**Make Your Home
FIRE SAFE**

DEFENSIBLE SPACE improves your home's chance of surviving a wildfire and protects the firefighters defending your home.